

Post Panels



Post Collar

Sizes (Diameter)
2" / 2.5"
50mm / 64mm



Standard Height Panel

Height	Width	Weight
36"	49"	32 lb
914mm	1.24m	14.5 kg



Extra Height Panel

Height	Width	Weight
48"	49"	41 lb
1.22m	1.24m	19 kg



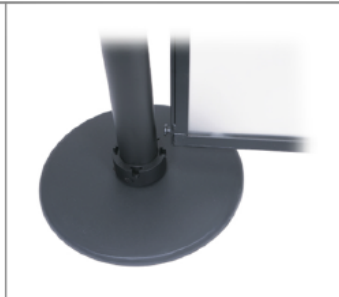
Extra Height Stanchion

Height	Weight	Post Diameter	Base Diameter
40"	23 lb	2.5"	14"
1015mm	10 kg	64mm	355mm

Simple Assembly



Attach collar to
post bottoms



Insert frame
lugs into collars



Pivot the panel
into place



Attach collar to
post tops

Base Options



14"/355mm diameter portable base



Floor socket for removable mounting



5"/130mm flange for permanent
surface mounting